



# The economic value of grouse hunting in the UK

**Kate Ives**  
Senior Business Intelligence Officer



# About BASC



**Largest** hunting (shooting) organisation in the UK

**>145,000** memberships



Represents **all types** of sporting shooting types and has **specialist** teams



**Evidence-based.** Has its own research team

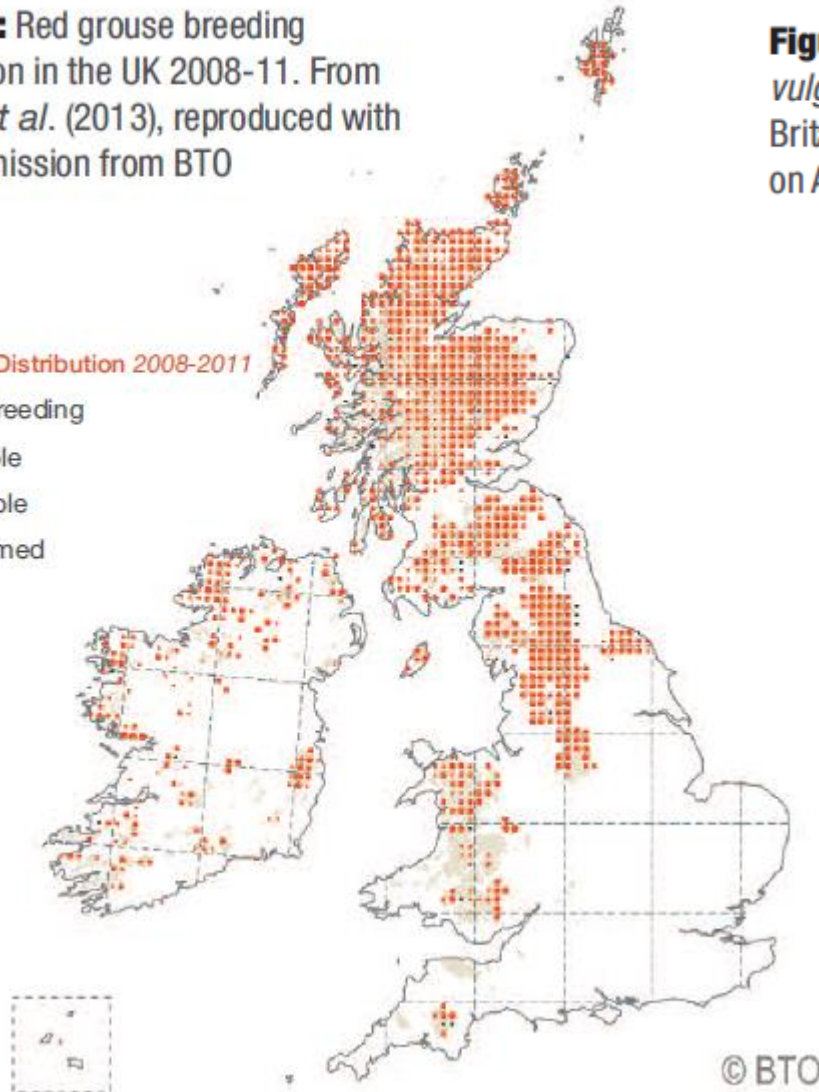


# Location of red grouse

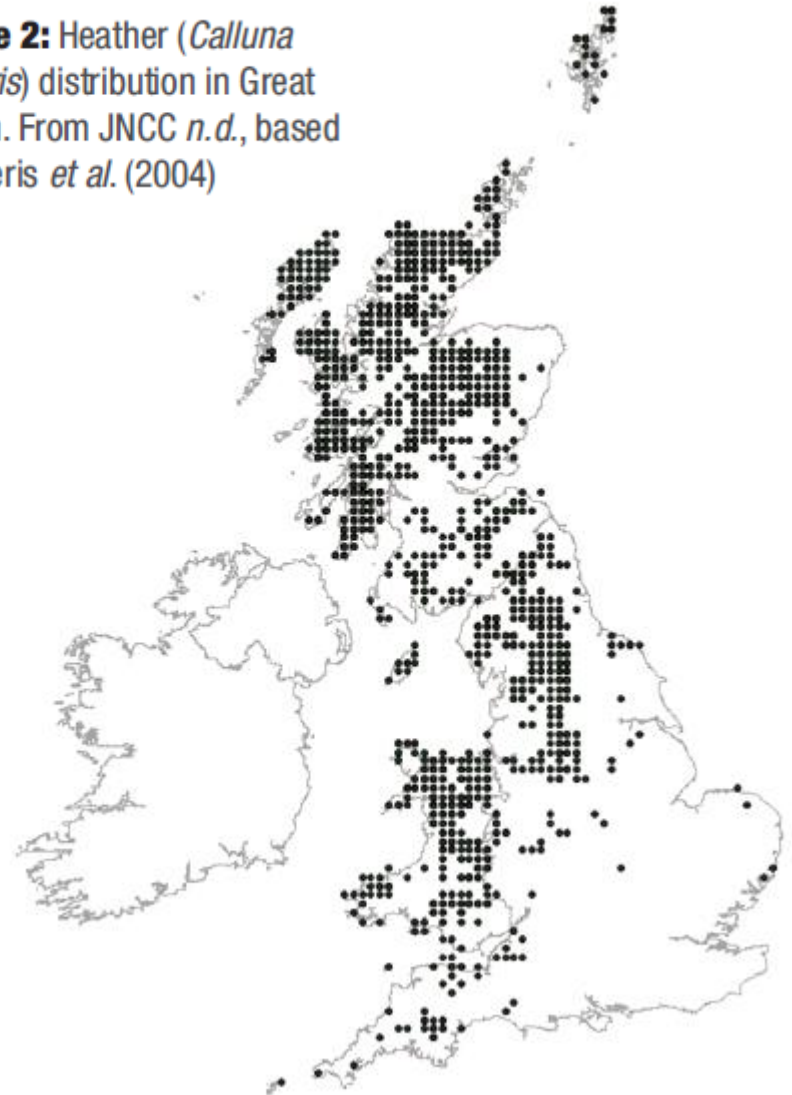
**Figure 1:** Red grouse breeding distribution in the UK 2008-11. From Balmer *et al.* (2013), reproduced with kind permission from BTO

**Breeding Distribution 2008-2011**

- Non-breeding
- Possible
- Probable
- Confirmed



**Figure 2:** Heather (*Calluna vulgaris*) distribution in Great Britain. From JNCC *n.d.*, based on Averis *et al.* (2004)



# The role of grouse hunting

The uplands **need management.**







Moorland managers are **upland custodians.**

Hunting is one of the few uplands land uses **not directly subsidised** by the government.

Hunting offers a 'free service' via **private investment.**



# Economic value

UK country	Estimate	Date of estimate
England & Wales  	<b>£67.7m (€78.9m)</b>	2011
Scotland 	<b>£23m (€26.7m)</b> OR <b>£30m (€34.9m)</b> wages alone	2010  2013
  	<b>£90.7m - £97.7m</b> <b>(€105.7m - €113.8m)</b>	2010-2013



# Economic value

**£67.7m (€78.9m)** value in England & Wales (2011)





Around **22%**  
(£15.2m/€17.7m) = **goods  
and services** such as  
travel & accommodation,  
and activities which  
support supply chains

Around **78%**  
(£52.5m/€61.2m) = spent  
on **land management**

~10% agri-environment  
scheme funded work for  
public good\*

\*CAP subsidies are only available  
when the land includes farming.

# Employment

UK country	Estimate	Date of estimate
England & Wales  	<b>1,520 FTE jobs</b>	2011
Scotland 	<b>1,072 jobs</b> OR <b>2,640 FTE jobs</b>	2010  2013
  	<b>2,592 – 4,160</b>	2010-2013

FTE = full time equivalent

# Employment

## Types of sport hunting providers:

- Highly commercialised: avg. **20.5** FTE
- Non-commercial: avg. **1.5** FTE
- Sport non-primary: avg. **2** FTE





# Tourism benefits

**£155m** **annual**  
country sports tourism  
expenditure in Scotland

Country sports visitors  
stay in Scotland  
**6 nights  
longer**   
than the average tourist

---

## COUNTRY SPORTS CONTRIBUTE MORE TO THE SCOTTISH ECONOMY



than do wildlife watching, cycling, water sports,  
snow sports, horse riding and some adventure activities

---

# Tourism

**59:** Average number of visitor nights generated per hunting provider

**910,000** visitor nights generated by hunting and stalking in Scotland

**4,100** FTEs, **£21m/€24m** GVA provided by hunting tourism in Scotland...

... made up of **2,600** direct FTEs & **1,500** indirect FTEs (e.g. in supply chain)

Source: PACEC 2014





## Local business

6 providers in Angus  
Glens:

- Nearly **£5m** (**€5.8m**) annual local business benefit for **941** businesses
- There are >20 providers...

- McMorran et al. (2015)

# Other forms of value are harder to measure

<b>Service type</b>	<b>Description</b>	<b>Example(s)</b>
Cultural	Services providing non-material benefits from ecosystems.	Cognitive development, reflection, recreation, education, aesthetic experiences.
Supporting	Services which are necessary for the production of other services.	Provisioning of habitat, primary production, water cycling, nutrient cycling.
Regulating	Benefits derived from the way ecosystem processes are regulated.	Flood regulation, water purification, air quality maintenance, carbon storage and sequestration, climate regulation, pest and disease control.
Provisioning	Products obtained from ecosystems	Food production, animal products, crops, fresh water.



# Ecosystem services

Habitat / wildlife management	Cultural	Regulating	Supporting	Provisioning
Increased biodiversity	Cultural		Supporting	
Control of invasive species & pests		Regulating		
Reducing disease		Regulating		
Carbon, wildfire & flood regulation		Regulating		
Community benefits	Cultural			
Landscape of high cultural value	Cultural			
Investment into conservation			Supporting	
Food production (£490m / €577m)				Provisioning

Value = ???

Conservation of globally and nationally important species

UP TO **5** TIMES



more threatened wading birds supported on moors managed by gamekeepers



Preservation of the UK's biggest carbon store

Managing heather helps preserve and protect

**UK's BIGGEST CARBON STORE**



Landscape scale management

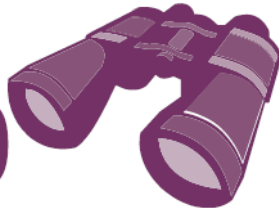
**79%**



of the Pennines and N.Yorks moors' Special Protection Areas are managed for grouse

Breathtaking scenery and wildlife for everyone

**90%**



of English grouse moors fall within a National Park or an Area of Outstanding Natural Beauty

Conservation of globally threatened habitat

Heather moorland is rarer than rainforest

**75%**

is found in Britain because of grouse moor management

Fresh water sources and reduced flood risk

**70%**



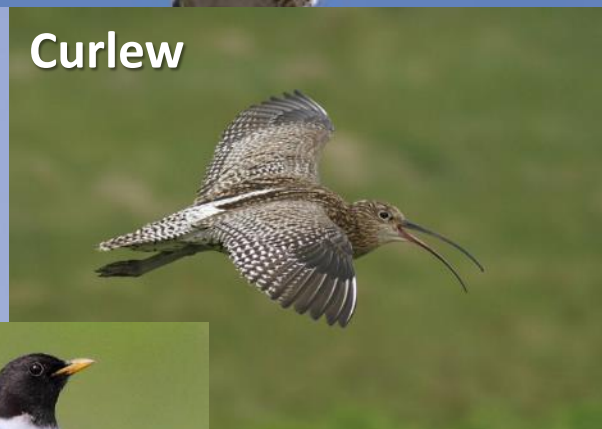
of the UK's drinking water comes from the uplands





# Biodiversity

Some of the species that research has shown to benefit from management for shooting:



# Cultural benefits

**Management**  
for hunting  
provides a  
landscape with...

**Recreational**  
value

**Aesthetic**  
value

**Wellbeing**  
value





# Cultural benefits



Prized for openness; heather contributes to quality of experience. Landscape quality affected through scrub and bracken encroachment

- Williams 2011



**Most uplands have landscape protection status, such as:**

SSSIs

AONBs

National Parks

90% English  
GMs

# Case study

## Annual costs – small grouse shoot in the north of England - 8 shooters plus partners and 10 shoot days/year

Salaries - 1 full time, 1 part time keeper	£35,000-40,000 (£37,500 midrange)
Beaters' pay	£12,000
Caterer	£5,000
Amount spent by shooters & their partners on local accommodation	£16,000
Habitat management costs	£50,000
<b>Total</b>	<b>£120,500/€140,383 a year</b> excluding...

'Avoided loss' of people in living & working in the local area (GK's families)

Lease costs

Employment on-costs such as vehicles & accommodation

At least ½ shooters will stay in the area for a few more days than they come to shoot



## With the benefits of grouse shooting

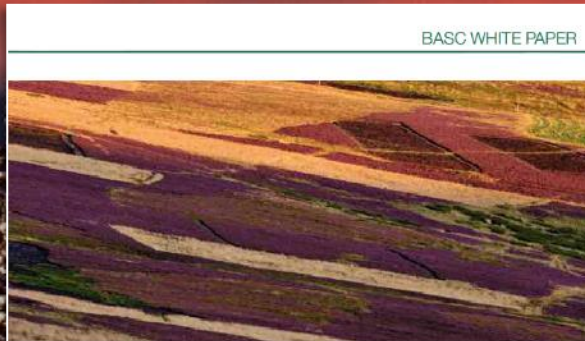
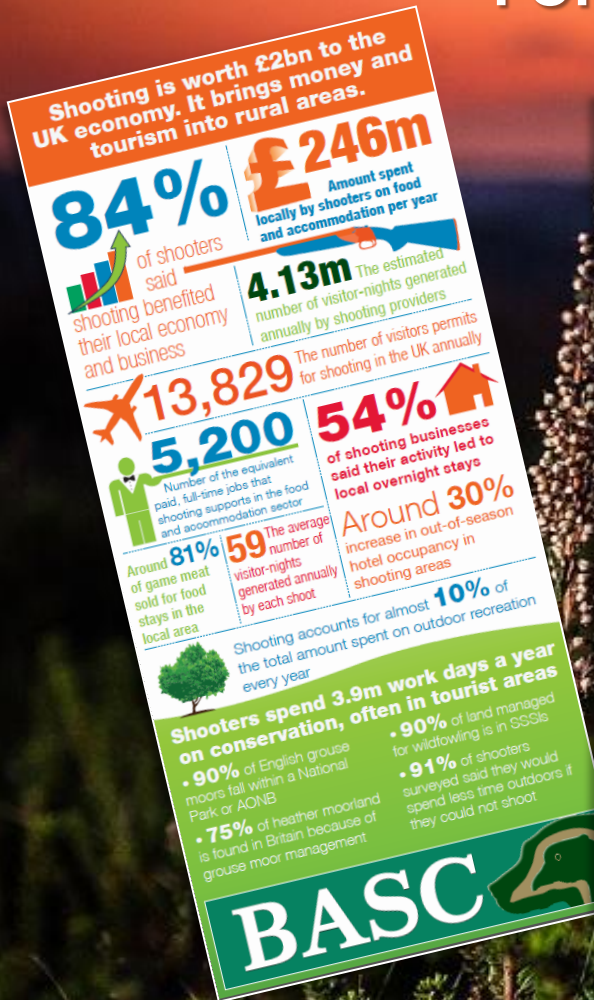


## Losing grouse shooting creates the risks of





For more information...



BASC WHITE PAPER

Grouse shooting and management in the United Kingdom: its value and role in the provision of ecosystem services



Search online for 'BASC infographics' or 'BASC white papers'





Thank you for listening

