

# Reducing hunting of Bewick's Swans across their flyway: identifying practical approaches

Julia Newth

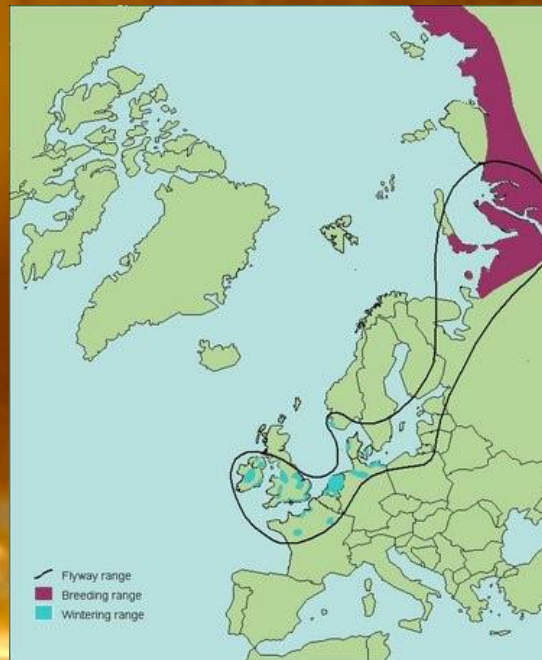
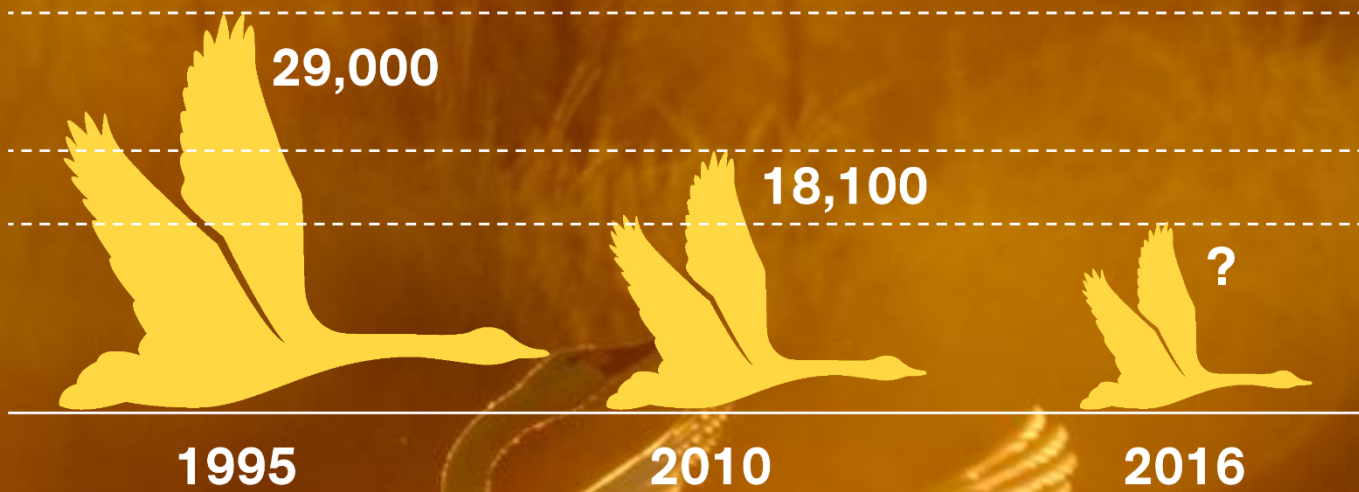
Wildfowl & Wetlands Trust / University of Exeter, UK

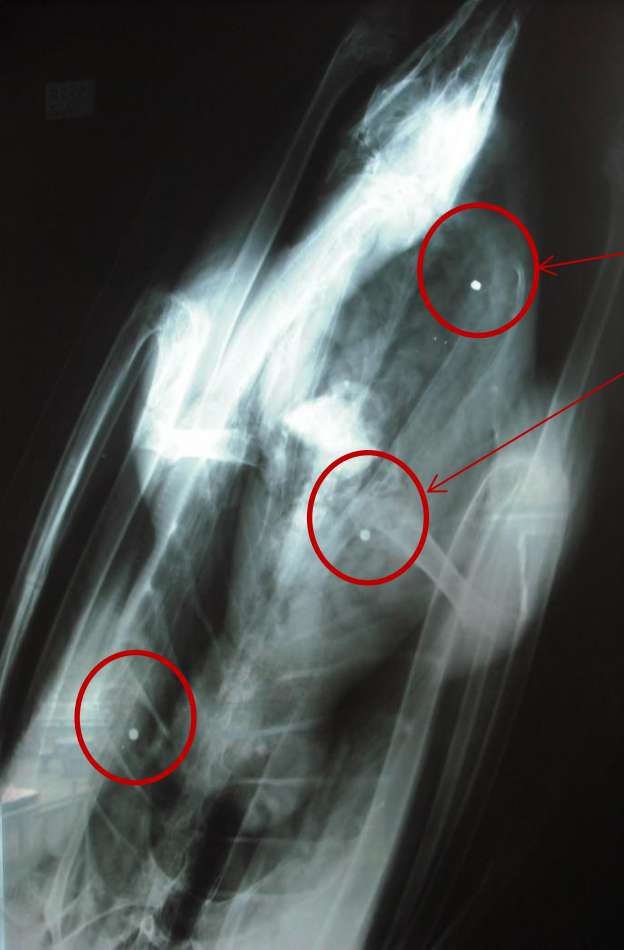


E-nv Technologies

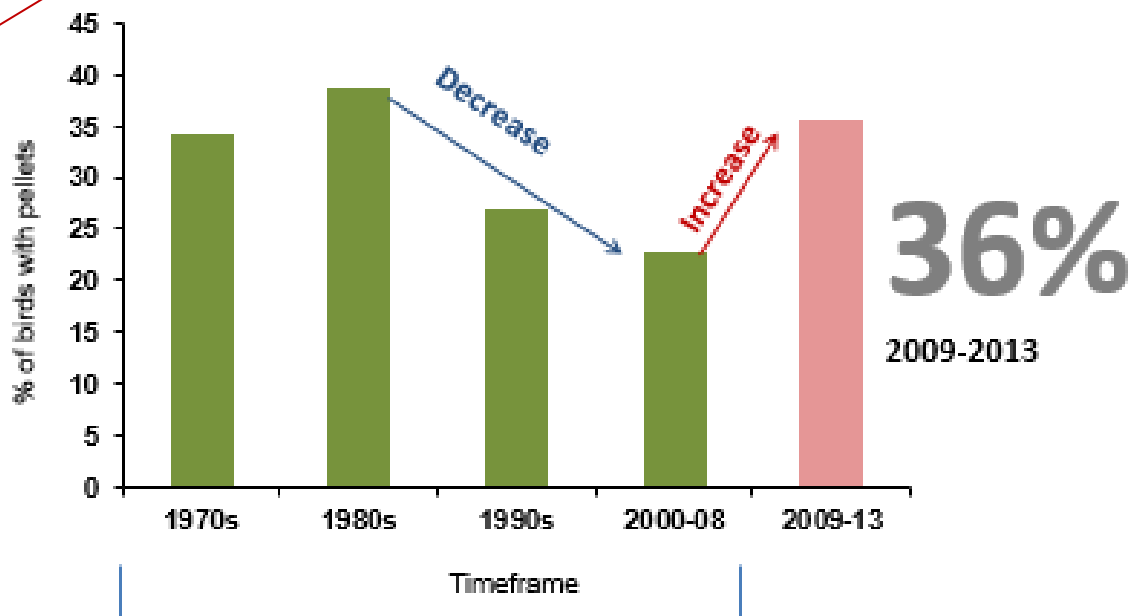


# DECLINE OF BEWICK'S SWAN IN EUROPE





shotgun pellets



Newth et al. 2011



Illegal hunting



WHERE?



Wintering sites?



Breeding grounds?



Staging sites?



WHO & WHY?



Knowledge gaps



Working with communities in Russia.

26% admitted to hunting a Bewick's swan in the previous three years  
(15% of those accidentally)

### WHO?

- People from villages/towns
- Tundra inhabitants
- Regional hunting tourists
- Hunting tourists from other regions



...d a Bewick's swan in

...that Bewick's swans  
...their village







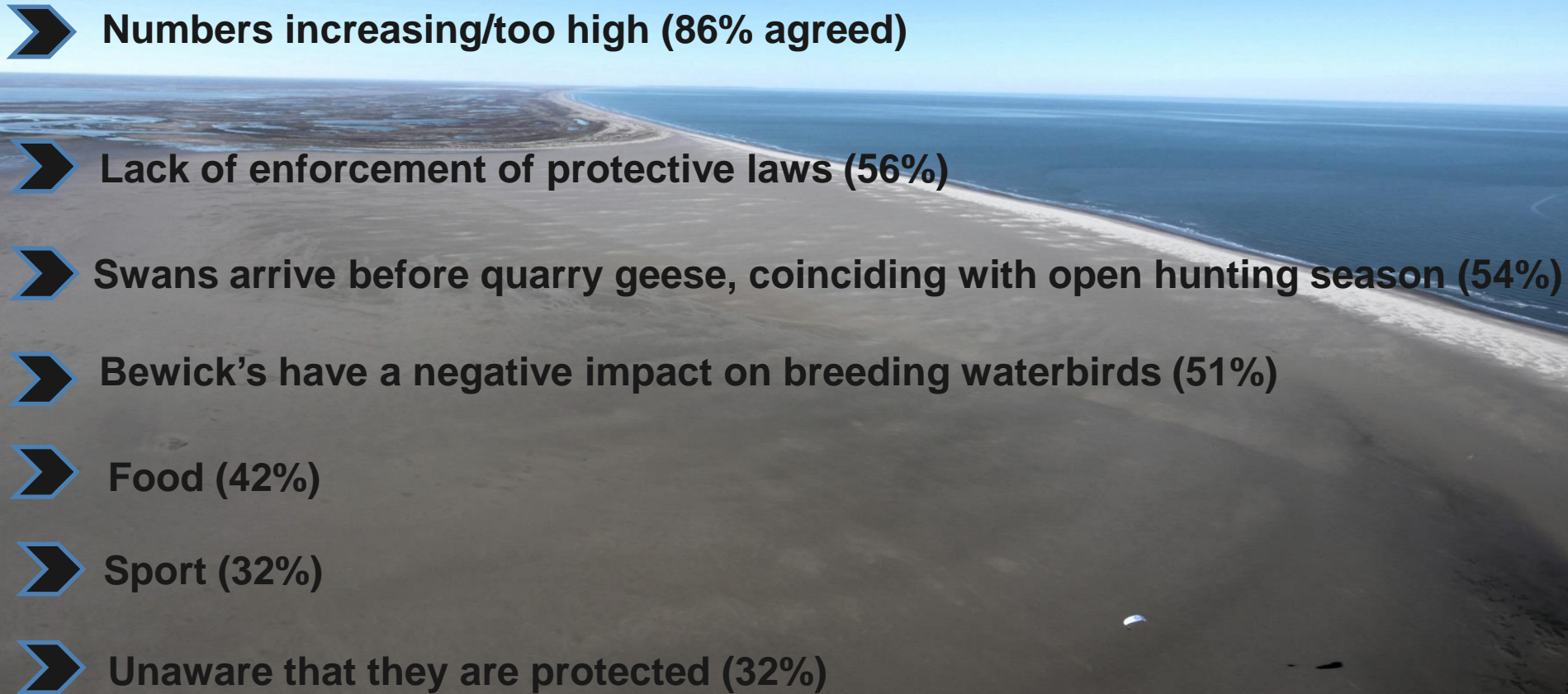
**Whooper Swan**



**Mute Swan**

**Bewick's Swan**

**14.4% could identify a Bewick's swan**

- 
- **Numbers increasing/too high (86% agreed)**
  - **Lack of enforcement of protective laws (56%)**
  - **Swans arrive before quarry geese, coinciding with open hunting season (54%)**
  - **Bewick's have a negative impact on breeding waterbirds (51%)**
  - **Food (42%)**
  - **Sport (32%)**
  - **Unaware that they are protected (32%)**



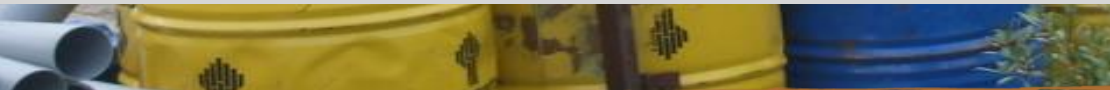


Aims:

**(I) Increase knowledge** - ecology, species identification, protective laws, waterbird hunting permits and waterbird hunting zones:

- Hunters – inhabitants
- Hunting tourists
- School children
- Regional government

**(II) Increased enforcement?** Explore opportunities



Action Plan (Hunters Workshop, Naryan Mar, 2016)



## 1. Content & key messages

## 2. Materials and resources

## 3. Dissemination of information

- Swan champion network
- Information for targeted websites
- Content for the press and broadcast media
- Information on receipt of seasonal hunting licences
- Learning sessions for schools across the region



## 4. Evaluation of interventions

- Measure changes in illegal hunting
- Measure increased knowledge among hunters (related to behaviour and behavioural intention)







# 51

activities in  
10 countries

# 6

conservation  
workshops

# 700+

articles published  
internationally

# 340+

International TV &  
radio appearances

# 650+

UK TV & radio  
appearances






Opening of doors for wetland conservation



# Can you help?







***“There needs to be a paradigm shift from people as a problem to people as part of the solution”***

**- Bath & Frank 2011**



THANK YOU FOR LISTENING!

[julia.newth@wwt.org.uk](mailto:julia.newth@wwt.org.uk)